



# Leadbeater's Possum Detection Report

Coupe 286-507-0015 'Huckleberry Finn'

Tom Burns Road, Rubicon State Forest



**Report on two Leadbeater's Possum (*Gymnobelideus leadbeateri*) detections at VicForests scheduled logging coupe 286-507-0015, Rubicon State Forest.**

## Abstract

Forest in and adjacent to VicForests scheduled logging coupe 286-507-0015 was investigated to assess presence/absence of the critically endangered Leadbeater's Possum. WOTCH surveyors detected Leadbeater's Possum twice. The investigation shows that VicForests has scheduled logging operations in areas of forest currently inhabited by Leadbeater's Possum. The methodology, results and conclusions are detailed below.

**Surveyors:** Philip Marshall, Jocelyn Richardson,  
David Thorn, Alana Mountain

**Dates of investigation:** 21/12/2020  
7/8/2021

**Author:** Philip Marshall  
[wotch.reports@gmail.com](mailto:wotch.reports@gmail.com)  
WOTCH Inc.

**Date of report:** 11/10/2021

## Introduction

VicForests logging coupe 286-507-0015 'Huckleberry Finn' is listed on the VicForests Timber Release Plan approved in September 2021. The coupe is located on Tom Burns Road in the Rubicon State Forest. WOTCH actively surveyed the coupe for presence of the critically endangered Leadbeater's Possum.

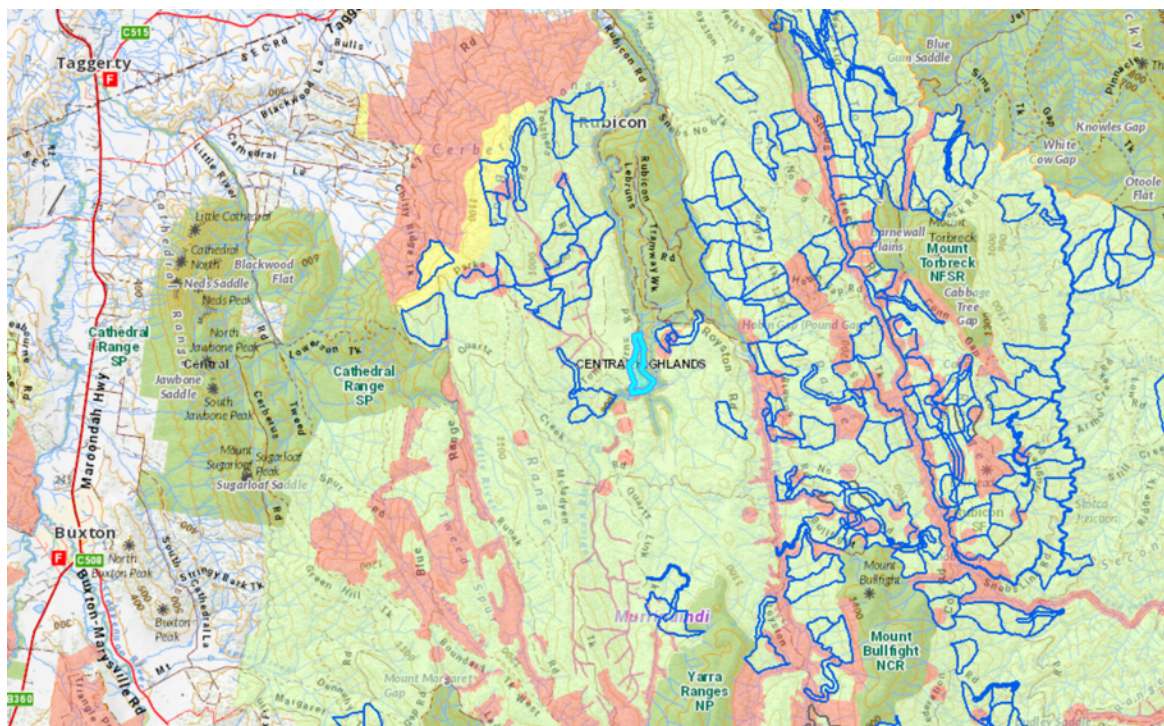


Figure 1 – Map showing the area and TRP coupes. The investigated coupe is highlighted in light blue. Source: Screenshot from DELWP's 'Forest Information Portal' <<https://maps.ffm.vic.gov.au/fip/index.html?viewer=fip>>.

## Method

An active search method was employed:

- Forest in and adjacent to logging coupe 286-507-0015 was actively surveyed between dusk and dawn
- Patches of habitat were surveyed for Leadbeater's Possum by scanning the mid-storey with a thermal imaging camera and, in some cases, mimicking the call of Leadbeater's Possum
- Once spotted on the thermal imaging camera, spotlights were used to light up the animal and video evidence was obtained using a Sony Handycam
- Upon successfully obtaining video footage of the animal, the camera was panned to a handheld Global Positioning System (GPS) unit to record evidence of the detection time and location
- A waypoint was marked on the GPS unit in the detection location
- Surveying each patch of forest was concluded shortly after obtaining the footage.

## Results

### Summary

This investigation detected Leadbeater's Possum at GPS coordinates 55H 0398768 5862170 (waypoint 'Huc02lbp') and 55H 0398718 5861808 (waypoint 'HCK01LBP').

Results are provided in the following sections:

- Results 1: Attached video evidence of the Leadbeater's Possum detections and GPS coordinates
- Results 2: Screenshots from the attached video evidence showing the Leadbeater's Possum detections and detection time and location (GPS coordinates)
- Results 3: A map of the Leadbeater's Possum detection locations and recommended buffer.

### Results 1

Refer to attachments 1, 2 and 3.



Results 2



*Figure 2 – Screenshot of Leadbeater's Possum detection Huc02lbp*



*Figure 3 – Screenshot of Leadbeater's Possum detection Huc02lbp*





Figure 4 – Screenshot of Leadbeater's Possum detection Huc02lbp



Figure 5 – Screenshot of Huc02lbp location (GPS coordinates)





*Figure 6 – Screenshot of Leadbeater's Possum detection HCK01LBP*



*Figure 7 – Screenshot of Leadbeater's Possum detection HCK01LBP*

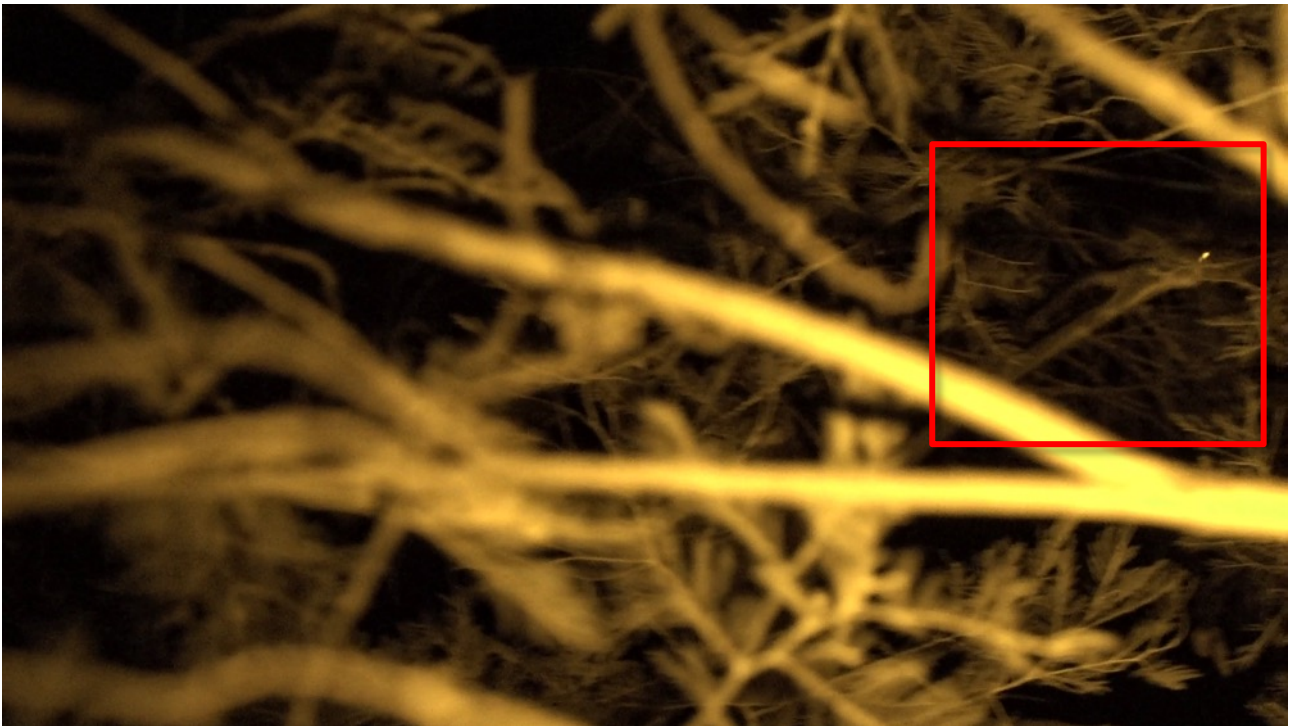


Figure 8 – Screenshot of Leadbeater's Possum detection HCK01LBP



Figure 9 – Screenshot of HCK01LBP location (GPS coordinates)



Results 3

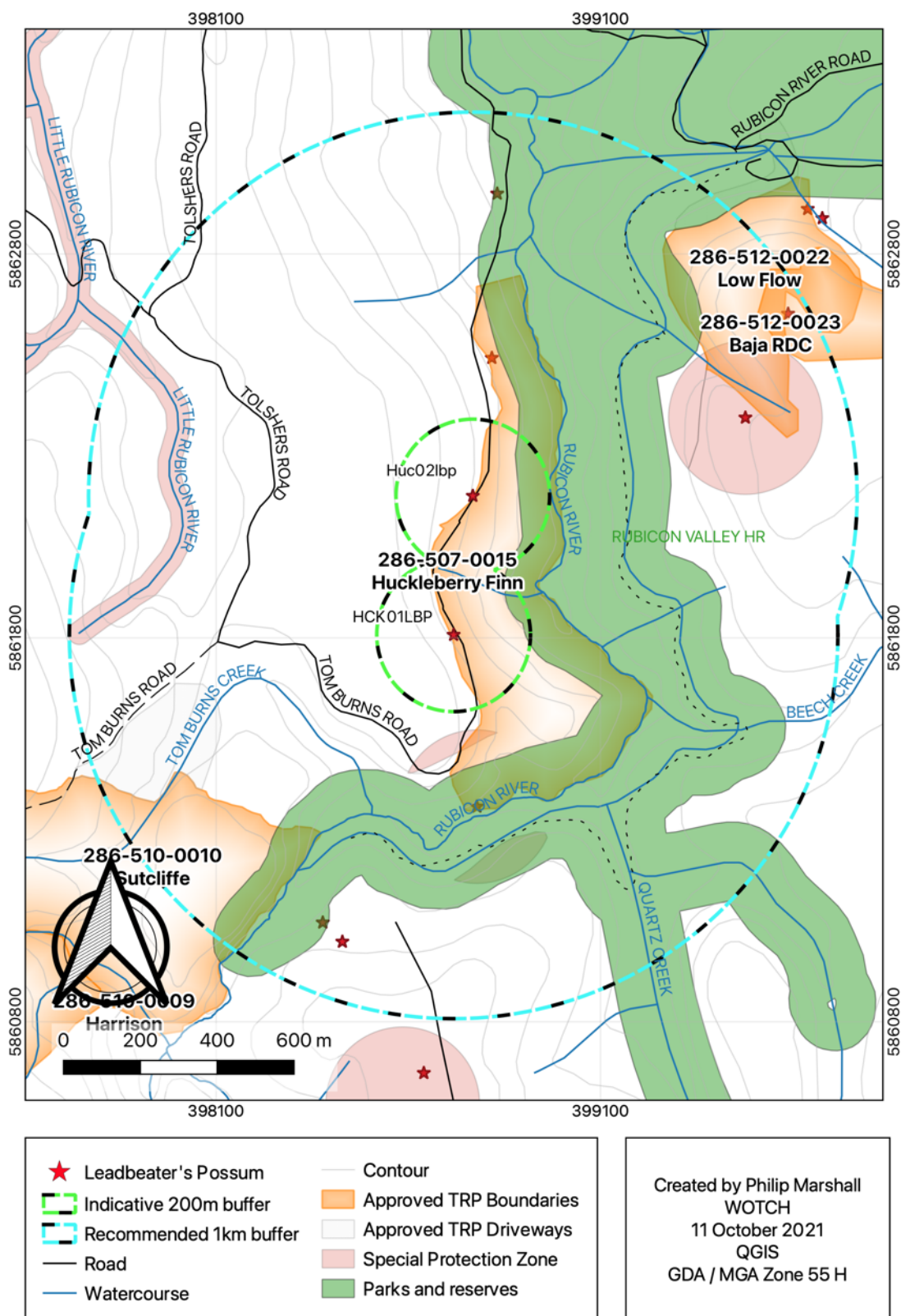


Figure 10 – Map of the Leadbeater's Possum detections at VicForests logging coupe 286-507-0015 with indicative 200m and scientifically recommended 1km Leadbeater's Possum buffers.



## Discussion

This report has detailed the detection of Leadbeater's Possum in VicForests scheduled logging coupe 286-507-0015.

### Recommended prescriptions

The following prescriptions relevant to this report were recommended by David Lindenmayer, David Blair, Lachlan McBurney and Sam Banks from the Australian National University in their paper produced in July 2013, *New Restoration Forest Management Prescriptions to conserve Leadbeater's Possum and Rebuild the cover of Ecologically Mature Forest in the Central Highlands of Victoria*:

#### **Prescription 2 – Protection of recorded locations**

2.1 All locations where Leadbeater's Possum has been recorded present in the past 15 years will be protected by a 1 km buffer from which logging (both clearfell and thinnings) is excluded.

#### **Prescription 3 – Protection of Hollow-bearing Trees**

3.1 Each hollow-bearing tree (whether living or dead) will be surrounded by a buffer of unlogged forest measuring 100 m in radius.

3.3 All trees 100 or more years old should be protected and surrounded by a buffer of unlogged forest measuring 100 m in radius.

#### **Prescription 5 – Protection of Streamside Buffers**

5.1.1 Streamside buffers will be widened to a minimum of 100 m either side of a stream, whether permanent or temporary/seasonal.

### Mandatory prescriptions

It is mandatory for VicForests, DELWP and any other organisations undertaking timber harvesting operations in state forest of Victoria to comply with all prescriptions outlined in the Code of Practice for Timber Production 2014 (the Code).

Figure 11 shows prescriptions in the *Planning Standards for timber harvesting operations in Victoria's State Forests 2014*, a document in the Code that must be enforced by DELWP, following the detection of a Leadbeater's Possum.

<p><b>4.2 Fauna – fixed zoning:</b></p> <p><b>Table 3. Establish and maintain SPZs of 200 m radius centred on each verified Leadbeater's Possum colony found since 1998 that is not located within forest areas severely impacted by the 2009 wildfire (Exclude colonies within Fire Severity classes 1 and 2).</b></p> <p><b>4.3 Fauna - detection based zoning</b></p> <p><b>Table 4. Establish a SPZ of 200 m radius centred on each verified Leadbeater's Possum colony.</b></p>
--

Figure 11 – excerpt from page 20 of the *Planning Standards*, under subheading 'Table 3 Fixed FMZ rules for fauna'.

Figure 12 shows prescriptions for addressing biodiversity conservation risks in the Code.

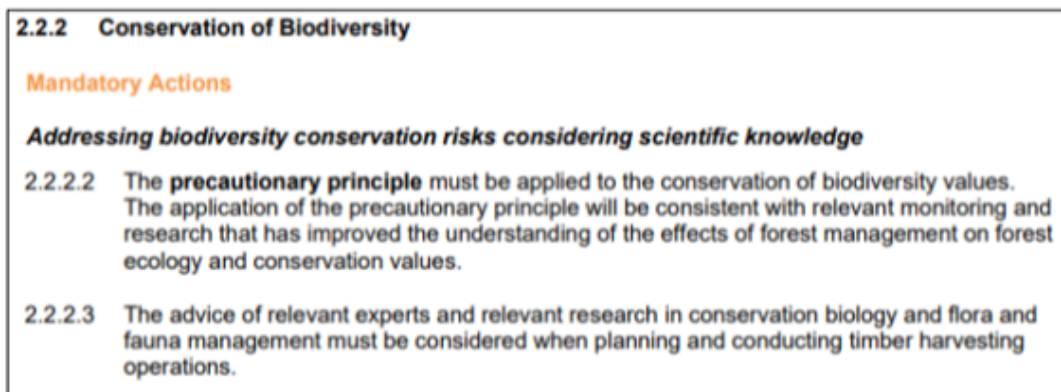


Figure 12 – excerpt from page 34 of the Code, under subheading '2.2 Environmental Values in State Forests'.

## Conclusion

This investigation has revealed that VicForests has scheduled clearfell logging operations in habitat for the critically endangered Leadbeater's Possum. Management actions must be implemented by VicForests and DELWP to protect this significant population of Leadbeater's Possum.

DELWP, as a minimum, must enforce the indicative 200m Special Protection Zone buffers around the Leadbeater's Possum detection locations in this report. However, to best support this population of Leadbeater's Possum, DELWP should enforce a 1km buffer around the detection and remove the subject coupes from the Timber Release Plan.

## Recommendations

1. DELWP, as a minimum, should restrain VicForests from commencing forestry operations within scheduled logging coupe 286-507-0015 that fall within the prescribed 200m Special Protection Zone around these detections as seen in Figure 10.
2. VicForests and DELWP should adhere to the relevant scientific advice for the species and establish a 1km Leadbeater's Possum buffer around the detections as seen in Figure 10.
3. Further comprehensive surveys should be undertaken throughout the entirety of the coupe and surrounding coupes to determine the locations of any other Leadbeater's Possum individuals that may be present in or around the coupes.
4. The coupe should be removed from the Timber Release Plan as this area is of high significance to the critically endangered Leadbeater's Possum.

