

# Leadbeater's Possum Detection Report

312-511-0003 'Real Madrid'  
Cambarville Road, Rubicon State Forest



**Report on a Leadbeater's Possum (*Gymnobelideus leadbeateri*) detection at VicForests scheduled logging coupe 312-511-0003 'Real Madrid', Rubicon State Forest.**

## Abstract

Forest in and adjacent to VicForests scheduled logging coupe 312-511-0003 was investigated to assess presence/absence of the critically endangered Leadbeater's Possum. WOTCH surveyors detected a Leadbeater's Possum. The investigation shows that VicForests has scheduled logging operations in areas of forest currently inhabited by Leadbeater's Possum. The methodology, results and conclusions are detailed below.

**Surveyors:** Philip Marshall, Jake Mckenzie

**Author:** Philip Marshall  
[wotch.reports@gmail.com](mailto:wotch.reports@gmail.com)  
WOTCH Inc.

**Date of investigation:** 31/03/2020

**Date of report:** 10/03/2021

## Introduction

VicForests logging coupe 312-511-0003 'Real Madrid' is listed on the VicForests Timber Release Plan approved in December 2020. The coupe is located on Cambarville Road in the Rubicon State Forest. WOTCH conducted an active survey to assess the presence/absence of the critically endangered Leadbeater's Possum at the coupe.

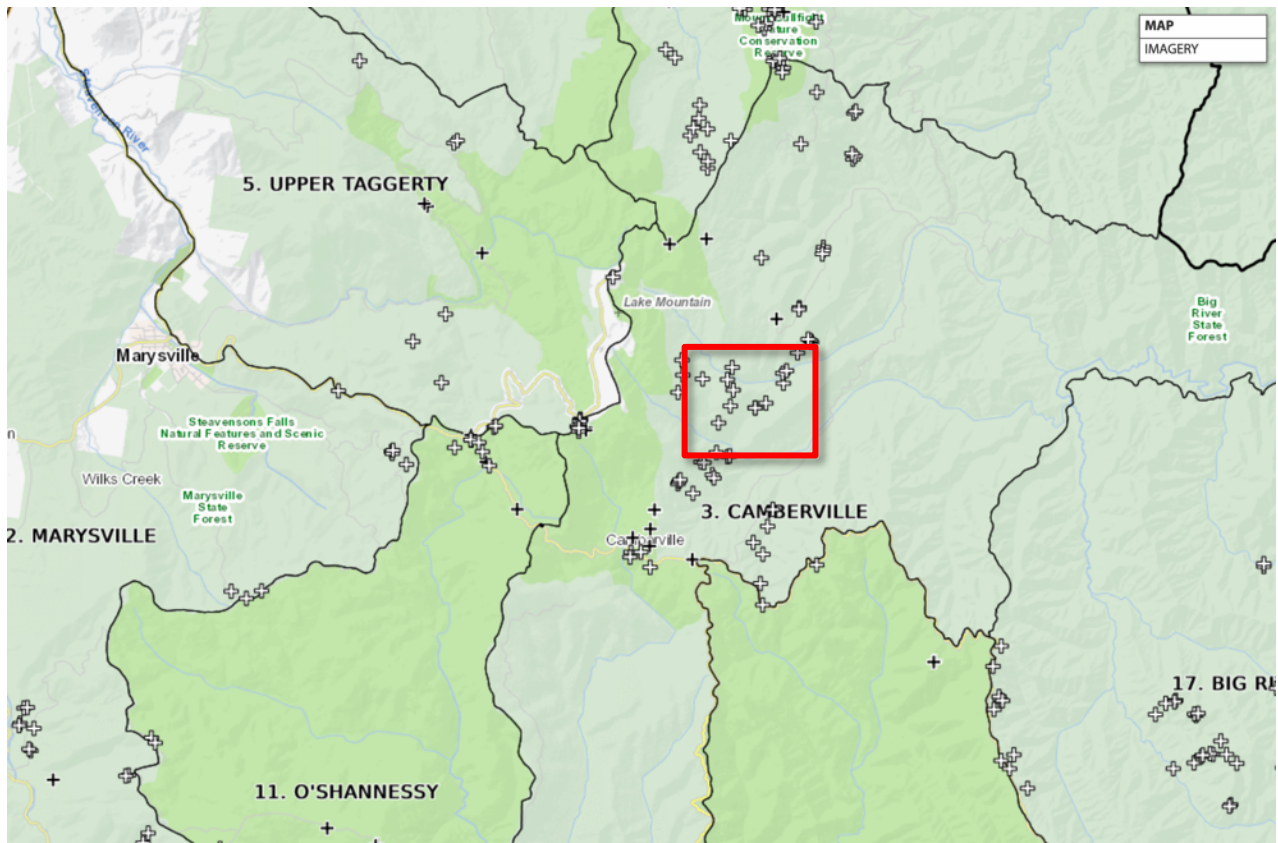


Figure 1 – Map showing the area and nearby Leadbeater's Possum detections. The investigation area is highlighted in the red box. Source: Screenshot from DELWP's 'Leadbeater's Possum Interactive Map'

<[http://lbp.cerdi.edu.au/possum\\_map.php](http://lbp.cerdi.edu.au/possum_map.php)>.

## Method

An active search method was employed:

- Forest in and adjacent to logging coupe 312-511-0003 'Real Madrid' was actively surveyed between dusk and dawn on 31 March 2020
- Patches of high-quality habitat were surveyed for Leadbeater's Possum by scanning the mid-storey with a thermal imaging camera and, in some cases, mimicking the call of Leadbeater's Possum
- Once spotted on the thermal imaging camera, spotlights were used to light up the animal and video evidence was obtained using a Sony Handycam
- Upon successfully obtaining video footage of the animal, the camera was panned to a handheld Global Positioning System (GPS) unit to record evidence of the detection time and location
- A waypoint was marked on the GPS unit
- Surveying each patch of forest was concluded shortly after obtaining the footage.

## Results

### Summary

This investigation detected a Leadbeater's Possum at GPS coordinates 0404114 5845757 (GDA / MGA Zone 55 H).

Results are provided in the following sections:

- Results 1: Attachment 1 is video file of the Leadbeater's Possum detection and GPS coordinates
- Results 2: Figures 2 to 5 are screenshots from the attached video showing the Leadbeater's Possum and detection time and location (GPS coordinates)
- Results 3: Figure 6 is a map of the Leadbeater's Possum detection location and recommended buffer.

### Results 1

Refer to attachments 1 and 2.

Results 2



*Figure 2 – Screenshot of Leadbeater's Possum detection*



*Figure 3 – Screenshot of Leadbeater's Possum detection*





Figure 4 – Screenshot of Leadbeater's Possum detection

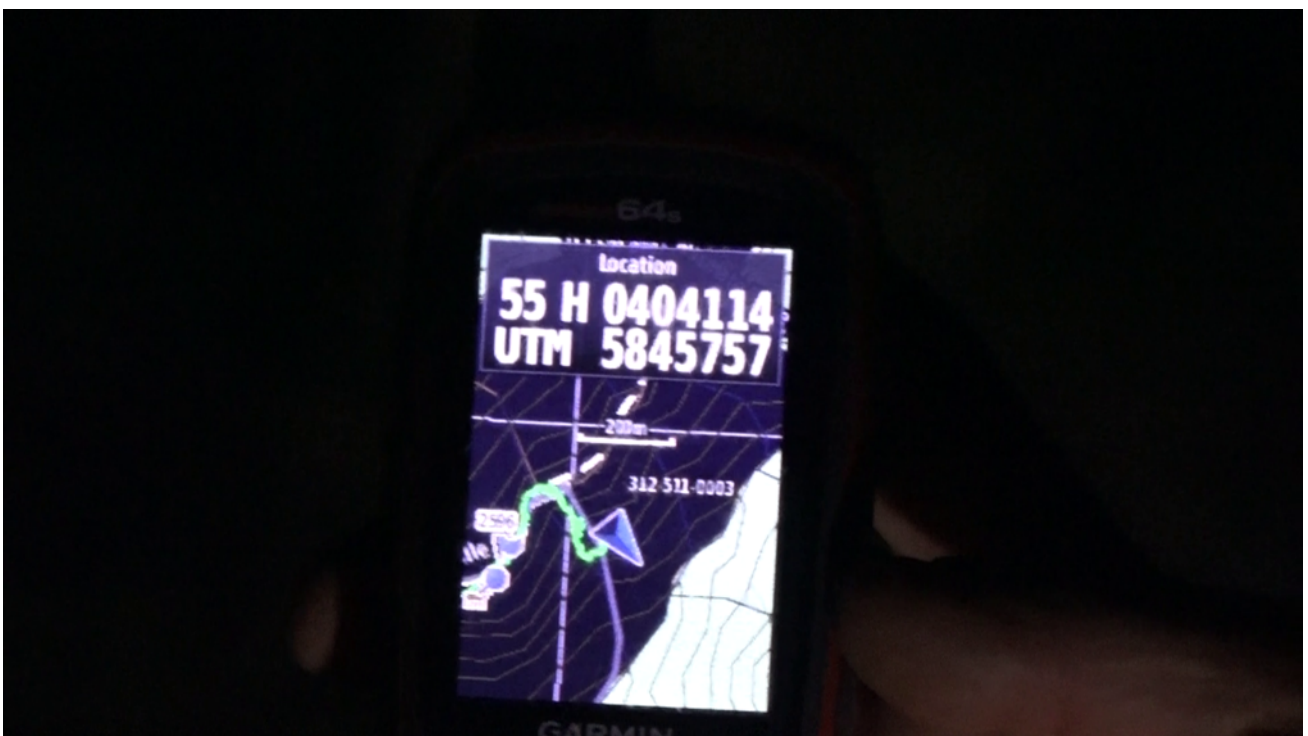


Figure 5 – Screenshot of location (GPS coordinates)

Results 3

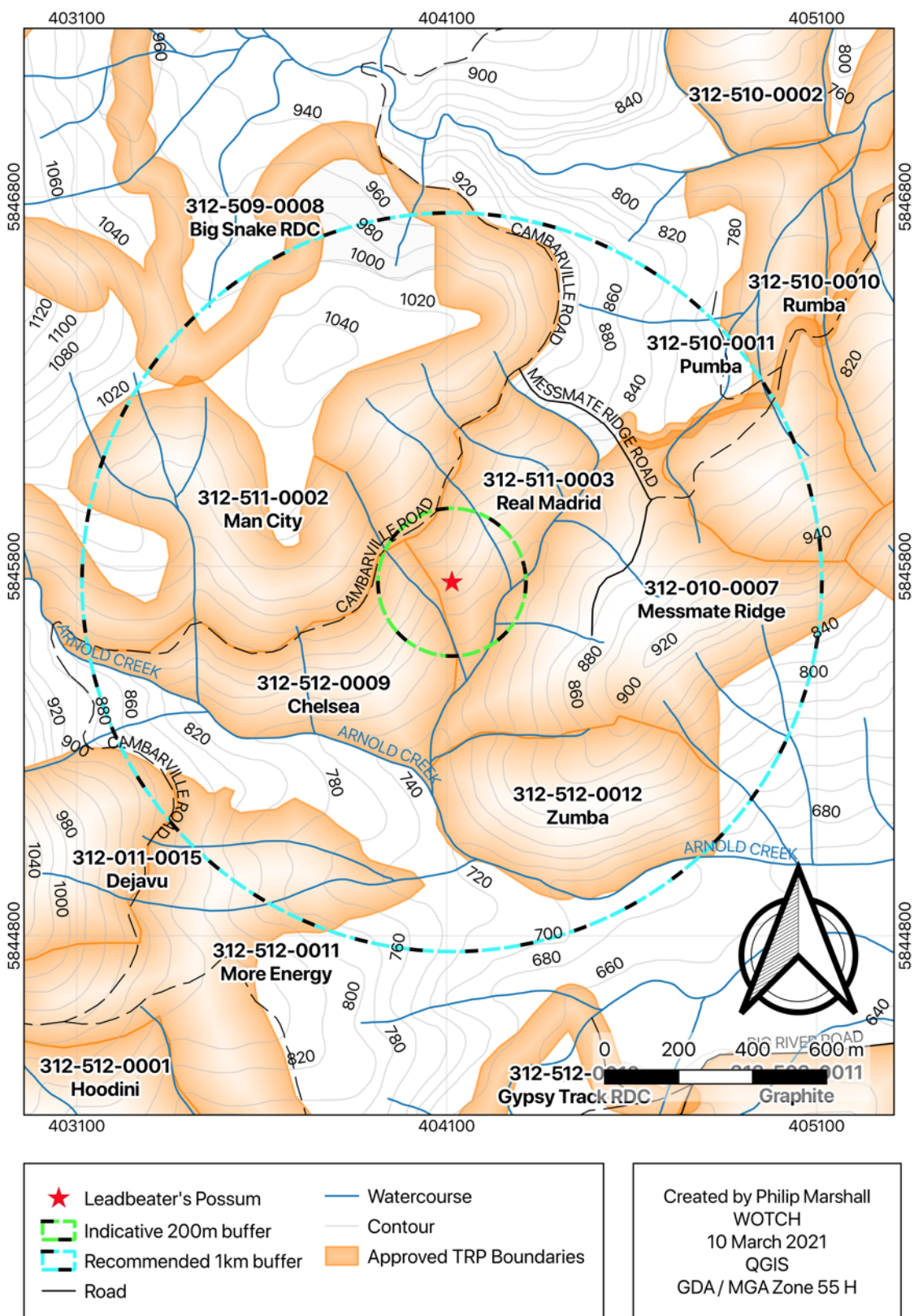


Figure 5 – Map of the Leadbeater's Possum detection at VicForests logging coupe 312-511-0003 'Real Madrid' with indicative 200m and scientifically recommended 1km Leadbeater's Possum buffers.

## Discussion

This report has detailed the detection of Leadbeater's Possum in VicForests scheduled logging coupe 312-511-0003 'Real Madrid'. It is critical that management actions are taken to protect this significant population.

### Recommended prescriptions

The following prescriptions relevant to this report were recommended by David Lindenmayer, David Blair, Lachlan McBurney and Sam Banks from the Australian National University in their paper produced in July 2013, *New Restoration Forest Management Prescriptions to conserve Leadbeater's Possum and Rebuild the cover of Ecologically Mature Forest in the Central Highlands of Victoria*:

#### **Prescription 2 – Protection of recorded locations**

2.1 All locations where Leadbeater's Possum has been recorded present in the past 15 years will be protected by a 1 km buffer from which logging (both clearfell and thinnings) is excluded.

#### **Prescription 3 – Protection of Hollow-bearing Trees**

3.1 Each hollow-bearing tree (whether living or dead) will be surrounded by a buffer of unlogged forest measuring 100 m in radius.

3.3 All trees 100 or more years old should be protected and surrounded by a buffer of unlogged forest measuring 100 m in radius.

#### **Prescription 5 – Protection of Streamside Buffers**

5.1.1 Streamside buffers will be widened to a minimum of 100 m either side of a stream, whether permanent or temporary/seasonal.

### Mandatory prescriptions

It is mandatory for VicForests, the Department of Environment, Land Water and Planning and any other organisations undertaking timber harvesting operations in state forest of Victoria to comply with all prescriptions outlined in the Code of Practice for Timber Production 2014 (the Code).

Figure 6 shows prescriptions in the *Planning Standards for timber harvesting operations in Victoria's State Forests 2014*, a document in the Code that must be enforced by DELWP, following the detection of a Leadbeater's Possum.

<p><b>4.2 Fauna – fixed zoning:</b></p> <p><b>Table 3. Establish and maintain SPZs of 200 m radius centred on each verified Leadbeater's Possum colony found since 1998 that is not located within forest areas severely impacted by the 2009 wildfire (Exclude colonies within Fire Severity classes 1 and 2).</b></p> <p><b>4.3 Fauna - detection based zoning</b></p> <p><b>Table 4. Establish a SPZ of 200 m radius centred on each verified Leadbeater's Possum colony.</b></p>
--

Figure 6 – excerpt from page 20 of the *Planning Standards*, under subheading 'Table 3 Fixed FMZ rules for fauna'.



Figure 7 shows prescriptions for addressing biodiversity conservation risks in the Code.

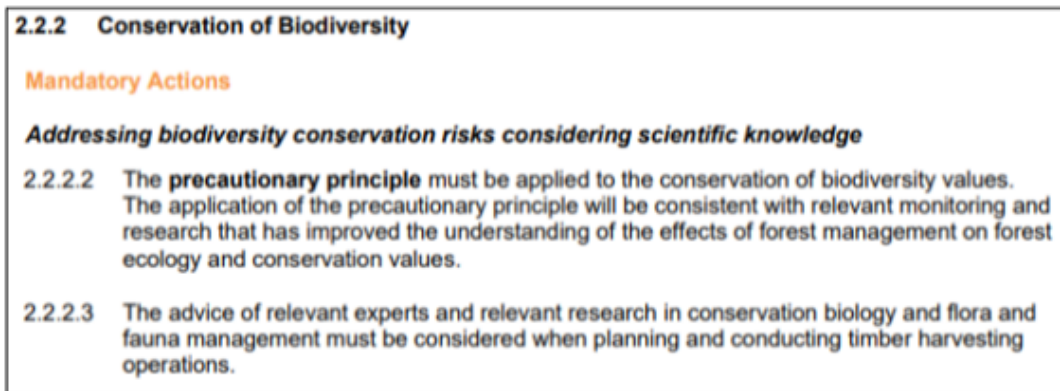


Figure 7 – excerpt from page 34 of the Code, under subheading '2.2 Environmental Values in State Forests'.

## Conclusion

This investigation has revealed that VicForests has scheduled clearfell logging operations in high quality habitat for the critically endangered Leadbeater's Possum. The high density of detections in both the present investigation and previous surveys in the surrounding areas indicate that this is a stronghold for the species. Further management actions must be implemented by VicForests and DELWP to protect this significant population of Leadbeater's Possum.

DELWP, as a minimum, must enforce the indicative 200m Special Protection Zone buffers around the four Leadbeater's Possum detection locations in this report. However, to best support this population of Leadbeater's Possum, DELWP should enforce a 1km buffer around each detection and remove the coupes from the Timber Release Plan.

## Recommendations

1. DELWP, as a minimum, should refrain VicForests from commencing forestry operations within scheduled logging coupes **312-511-0003 'Real Madrid'** and **312-512-0009 'Chelsea'** that fall within the prescribed 200m Special Protection Zone around these detections as seen in Figure 5.
2. VicForests and DELWP should adhere to the relevant scientific advice for the species and establish 1km Leadbeater's Possum buffers around the detection as seen in Figure 6.
3. Further comprehensive surveys should be undertaken throughout the entirety of the coupes to determine the locations of any other Leadbeater's Possum individuals that may be present in or around the coupes.
4. The coupes should be removed from the Timber Release Plan as this area is of high significance to the critically endangered Leadbeater's Possum.